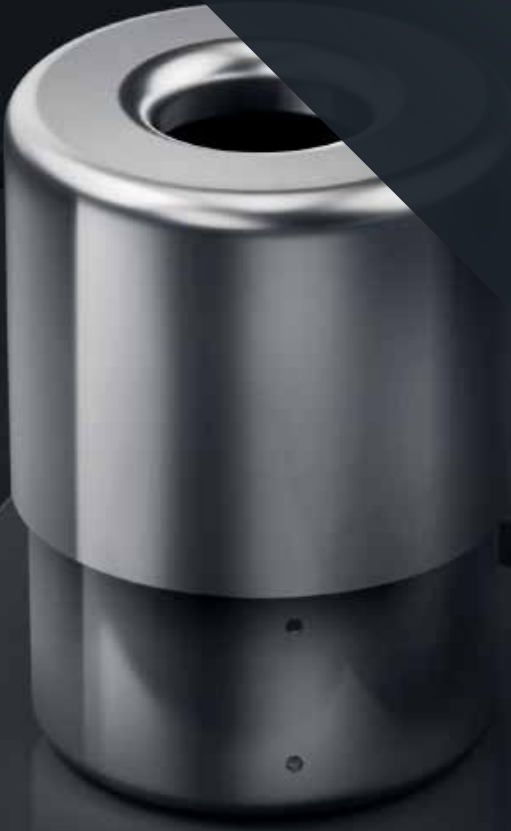




TENSIOMESH®

Maximum control for
unique metal fabric façades



TENSIOMESH®

Benefits at a glance

- ◆ Easy adjustment of the preload for GKD metal fabric façades
- ◆ Maximum control throughout the entire service life
- ◆ Easy installation
- ◆ Easy to monitor, even for non-specialist personnel
- ◆ Durable and weather-resistant
- ◆ High-grade and unobtrusive design



TENSIOMESH®

A small element capable of handling great tension

The new level of safety and quality for metal fabric façades

Flexible architectural metal fabrics from GKD lend ultimate functionality and aesthetics to the façades of exceptional buildings throughout the world. The specially developed stainless steel fabric designs are created to last the entire lifecycle of a building.

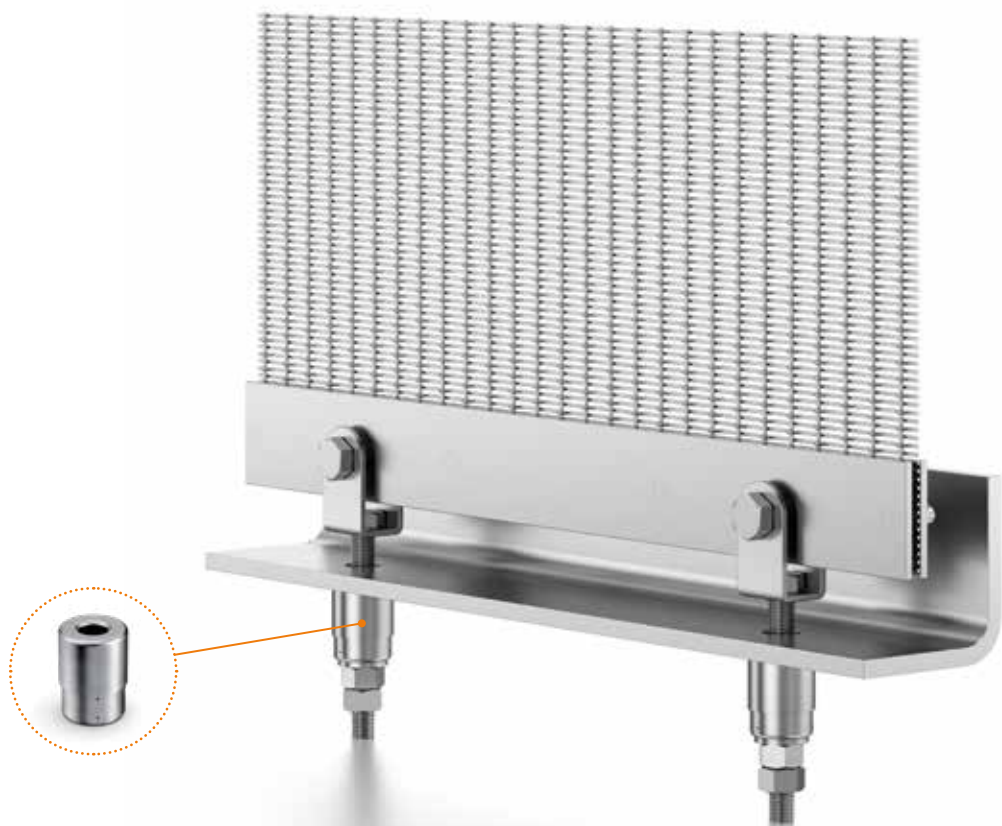
Securing correct mounting and a preload that is matched to the respective fabric type is the key to ensuring the safety and durability of the façades. However, companies performing the installation work are not always familiar with the special requirements of architectural fabrics. With **TENSIOMESH®**, GKD offers a patented system that provides ultimate control and safety not only to the experts involved in the planning and construction process, but also to building owners and managers.

Always the right tension

With **TENSIOMESH®**, the preload can be continuously monitored and maintained in line with the static stipulations for metal fabric façade installations. In light of the effects associated with climate change, this adjustment and control instrument is becoming increasingly important. For example, **TENSIOMESH®** indicates whether the fabric façade is still correctly tensioned following a severe weather event. **TENSIOMESH®** is the result of GKD's 30-year commitment to metal fabric façade innovation.

TENSIOMESH®

Indispensable component of the overall system



TENSIOMESH®

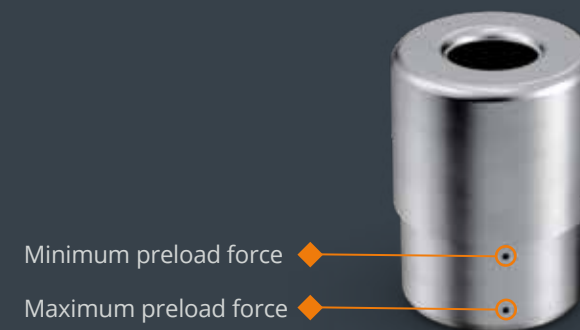
Perfect in combination with the fabric façade thanks to a high-grade stainless steel design.

At a glance

Clean design

GKD architectural metal fabrics and **TENSIOMESH®** are aesthetically matched to one another. Thanks to its clean design, **TENSIOMESH®** fits in unobtrusively with the façade structure. The robust and weather-resistant stainless steel finish helps secure a long service life.

TENSIOMESH® is a mechanical device. Measuring and controlling the preload is simple. Two small marks indicate when the preload is set correctly.



Minimum preload force

Maximum preload force

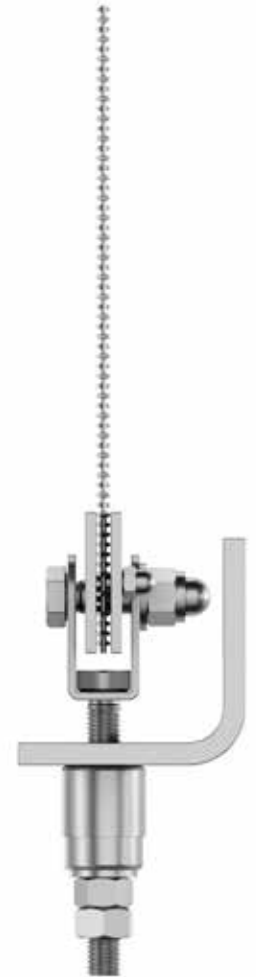
Installation and position of the patented system



TENSIOMESH®
Continuous monitoring of the preload of metal fabric façades.

Architectural metal fabrics from GKD are produced individually or offered as standardized system components. Architects, owners, and planners can rely on the holistic expertise of GKD when planning and installing the metal fabrics and mounting fixtures. This also includes detailed information on the fabrics, mounting types, and preload of the optimally matched solutions.

To monitor and measure the fabric tension, **TENSIOMESH®** is permanently integrated between the fabric fixing system and the substructure. It can be combined with various fixing systems. The preload remains in the optimum range thanks to the number of attachment points per linear meter.



TENSIOMESH®
Robust and weather-resistant design.



GKD – Gebr. Kufferath AG
Technical Weavers for Industry and Architecture

metalfabrics@gkd-group.com

gkd-group.com
